

# ATTENDANCE OVERVIEW

Attendance is made through attendance contacts with a teacher or staff member.

Attendance contacts can be made through any two-way, education-related communication between a student and staff.

Once a student makes an attendance contact, the staff member will mark the student's attendance.

Students are required to make attendance contacts every school day.

# How to Make Attendance Contacts

Attend a LIVE  
Class  
Connect Session



Watch a  
Class Recording  
AND Email  
Teacher After Watching



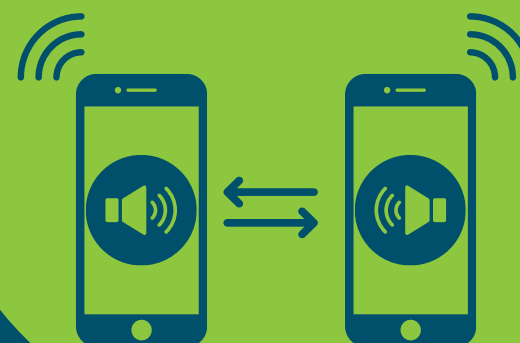
Submit an  
Assignment



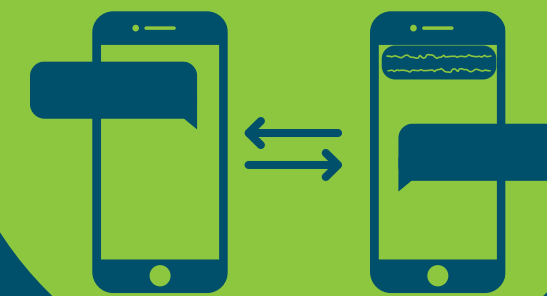
2-way Email  
Exchange with Staff



Phone  
Conversation  
with Staff



2-way Text  
Exchange with Staff



# TRUANCY PROCESS

Truancy is defined at EVA as five consecutive, unexcused absences.

**3 Days**

When a student reaches three consecutive absences, teachers and your Engagement Coach will begin reaching out.

**5 Days**

If a student reaches five consecutive absences, the student, legal guardian, and Learning Coach will receive an email from the Compliance Officer checking in and making you aware of the absences.

**7 Days**

After seven consecutive absences, a certified truancy letter will be mailed to your home address.

**11 Days**

## TRUANCY WITHDRAWAL

If a student reaches more than 10 consecutive, unexcused absences, the student will be withdrawn for truancy per State Law.

# Excused Absences



We realize some absences are unavoidable.  
If your student will be absent for more than a day,  
please let us know.



## How to Excuse Absences

**Excused Absence Form**

[bitl.ly/EVA-Excused-Absence-Form](https://bit.ly/EVA-Excused-Absence-Form)

**Attendance Phone Line**

541-751-8060 Press 2 or ext. 846

**Attendance Email**

[attendance@evergreenvirtual.org](mailto:attendance@evergreenvirtual.org)

# CHRONIC ABSENTEEISM

*Chronic Absenteeism =  
Missing 10% of the school year*



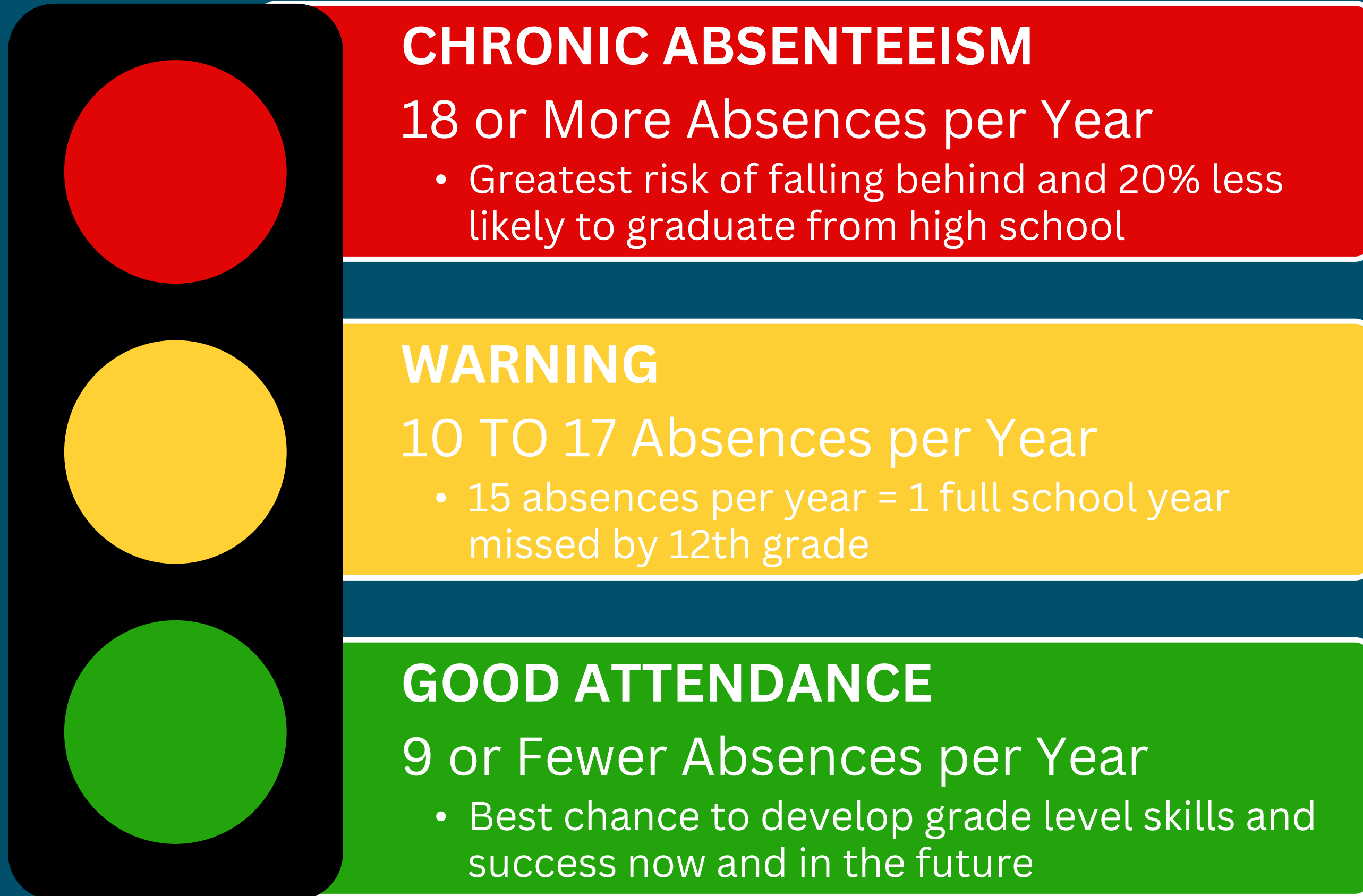
*= 2 days per month  
= 18 days per year*



*1 in 6 Oregon children is  
chronically absent.*

*Last school year,  
over 40% of EVA students  
were chronically absent.*

# ATTEND. LEARN. SUCCEED.



# Why Attendance Matters

Missing only two days a month negatively affects academic performance.

Skipping steps in learning now might make mastering advanced stuff later much harder.

Chronic absenteeism is an early warning sign that students are at risk of:

## Elementary

**Poor Reading**  
Not reading proficiently by the end of 3rd grade

## Middle School

**Academic Struggles**  
More likely to get suspended & be off-track in 9th grade

## High School

**Dropping Out**  
20% less likely to graduate from high school

# SUPPORT & RESOURCES

- Economically disadvantaged students are four times more likely to be chronically absent for reasons beyond their control, such as unstable housing, lack of access to healthcare, or lack of internet.

## Support & Resources

<https://bit.ly/EVA-Support-Resources>

## EVA Family Resource Guide

<https://bit.ly/EVA-Resource-Guide>

## Help is 3 Numbers Away

